



ELECTRICAL INDUSTRIES



2011 general catalogue 2012

FPB Palazzoli

CABLE AND CONDUIT FITTINGS



CABLE AND CONDUIT FITTINGS

CABLE & CONDUIT FITTINGS

Conformity to Standards:	CEI EN 60309-1	IEC 60309-1	Glow wire test:	850°C insert
	CEI EN 60309-2	IEC 60309-2	Self extinguishing:	V2
	CEI EN 60529	IEC 60529	Temperature resistance:	Operating -25 to +50°C Storage -30 to +70°C
Impact resistance:	>IK 08			

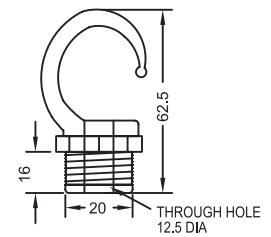
DIE-CAST ACCESSORIES

Screwed hooks (male)



	E.C.T.	MAX WORKING LOAD	CODE
Standard	20mm	10kgs	PD292

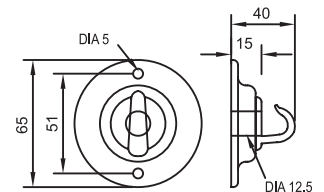
N.B. Maximum ambient operating temperature 60°C



Ceiling hook plates



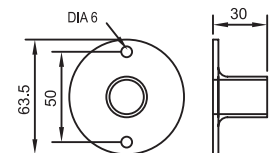
MAX WORKING LOAD	CODE
10kgs	PD293



Screwed dome covers



THREAD SIZE	CODE
20	PD411



CABLE AND CONDUIT FITTINGS

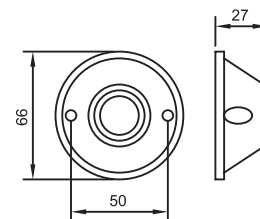
Ball and socket cover



CODE
PD1307A

Spring Loaded with Captive Screws

These circular swivel-jointed ball and socket units have a 20mm ISO metric thread. There is a braided copper earth link between the ball joint and the case. They are made from pressure die-cast Zinc Alloy and finished in a black epoxy resin stoved powder coating. The ball has a nominal movement of 15° in any direction.

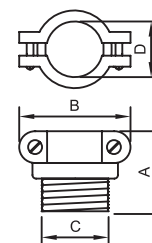


Cable glands for flexible cables with steel tape armouring



ISO METRIC THREADS mm	TO FIT CABLE mm	CODE
20 MALE	10-12	PD427
25 MALE	12-20	PD428
1 1/4" MALE	20-25	PD429

- These products do not incorporate a weatherproof seal

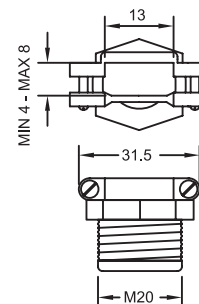


Bonding nipples



ISO METRIC THREADS mm	CODE
20mm male	PD435

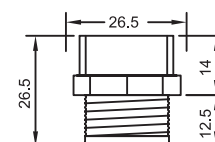
- For glanding of flat cable
- This product does not incorporate a weatherproof seal



Metric/imperial adaptors



MALE	FEMALE	CODE
3/4"	20mm	PD1452A
20mm	3/4"	PD1452B



CABLE AND CONDUIT FITTINGS

Cable glands

- A selection of brass cable glands suitable for all types of steel wire armoured cables, providing mechanical cable retention, & electrical continuity via armour wire termination
- Glands are manufactured in accordance with BS6121
- Each gland is supplied with a locknut, earth tag, & PVC shroud
- BW types do not incorporate a seal, & are suited to indoor installations only
- CW types feature an elastomer displacement seal which makes them suitable for outdoor installations
- Glands up to 32mm are supplied in a pack of two. Sizes above this are supplied individually

BRASS ARMoured CABLE GLAND PACKS

Type BW to BS6121 (for indoor application)



CODE	ENTRY THREAD SIZE mm	PACK SIZE
BW20S	20s	2
BW20	20	2
BW25	25	2
BW32	32	2
BW40	40	1
BW50	50	1
BW63	63	1
BW75	75	1

Type CW to BS6121 (for outdoor or indoor application)



CODE	ENTRY THREAD SIZE mm	PACK SIZE
CW20S	20s	2
CW20	20	2
CW25	25	2
CW32	32	2
CW40	40	1
CW50	50	1
CW63	63	1
CW75	75	1

CABLE AND CONDUIT FITTINGS

Cable gland capacity

STEEL TAPE ARMoured				
PVC FLEXIBLE				
	SIZE mm ²	O.D. OVER ARMOUR mm	M20 PD427	M25 PD428
2 core	0.05	8.07		
	0,05	9.01		
	1.00	9.05		
	1.05	10.01	*	
	2.05	12.09		*
	4.00	14.06		*
3 core	0.05	9.01		
	0,05	9.05		
	1.00	10.00	*	
	1.05	10.07	*	
	2.05	13.06		*
	4.00	15.04		*
4 core	0.05	9.06		
	0,05	10.01	*	
	1.00	10.08	*	
	1.05	12.08		*
	2.05	14.06		*
	4.00	16.05		*
5 core	0.05	10.00	*	
	0,05	11.00	*	
	1.00	12.06		*
	1.05	13.05		*
	2.05	16.03		*
	4.00	18.01		*
6 core	0.05	10.08	*	
	0,05	12.08		*
	1.00	14.02		*
	1.05	15.06		*
	2.05	17.06		*
	4.00	19.06		*

The above table is a guide to the size of cable which can be correctly accommodated by Armoured Cable Glands and Cable Saddle Clamps shown on pages 128-129 of this catalogue.

NOTE: This chart is for guidance only; actual cable dimensions should be considered before making final selection as these may vary due to the manufacturing tolerance permitted.

This table relates to PD428 & PD429 shown on page 128 only.

CABLE AND CONDUIT FITTINGS

Armoured gland pack - selector table

NOMINAL CONDUCTOR AREA (mm ²)	NUMBER OF CORES (600/1000V)											
	1	2	3	4	5	7	10	12	19	27	37	48
1.05	-	20S	20S	20S	20S	20S	20	20	25	25	32	32
2.05	-	20S	20S	20S	20	20	25	25	25	32	40	40
4	-	20S	20S	20	20	20	25	25	32	40	-	-
6	-	20	20	20								
10	-	20	25	25								
16	-	25	25	25								
25	-	25	25	32								
35	-	25	32	32								
50	20	32	32	40								
70	25	32	40	40								
95	25	40	40	50/50S								
120	25	40	50/50S	50/50S								
150	32	50	50/50S	63								
185	32	50/50S	50	63/63S								
240	40	50	63/63S	63								
300	40	63/63S	63/63S	75/75S								
400	50	63/63S	75/75S	75								

The above information and Selector Chart relate to BW and CW Armoured Cable Glands shown on page 129 of this catalogue.

Glands manufactured to BS6121: Pt. 1: 1989 for use with PVC, SWA, PVC 600/1000V cables to BS 6346: 1989.

NOTE: This chart is for guidance only; actual cable dimensions should be considered before making final selection as these may vary due to the manufacturing tolerance permitted in BS 6346: 1989.



Dealer's stamp



Argall Avenue, London E10 7QD - United Kingdom

UK Sales
 Tel: +44 (0)20 8539 0237
 Fax: +44 (0)20 8558 2718
 e-mail: sales@lewden.co.uk

Export Sales
 Tel: +44 (0)20 8988 7787
 Fax: +44 (0)20 8558 2001
 web: www.lewden.com